

MATERIAL NOTES:

1. IMPACT TESTS: EXEMPT PER UCS-66
2. NDE: UT PLATE PRIOR TO MACHINING OR MT/PT AFTER MACHINING. ALL MT PER APPENDIX 6; ALL PT PER APPENDIX 8.

MANUFACTURING NOTES:

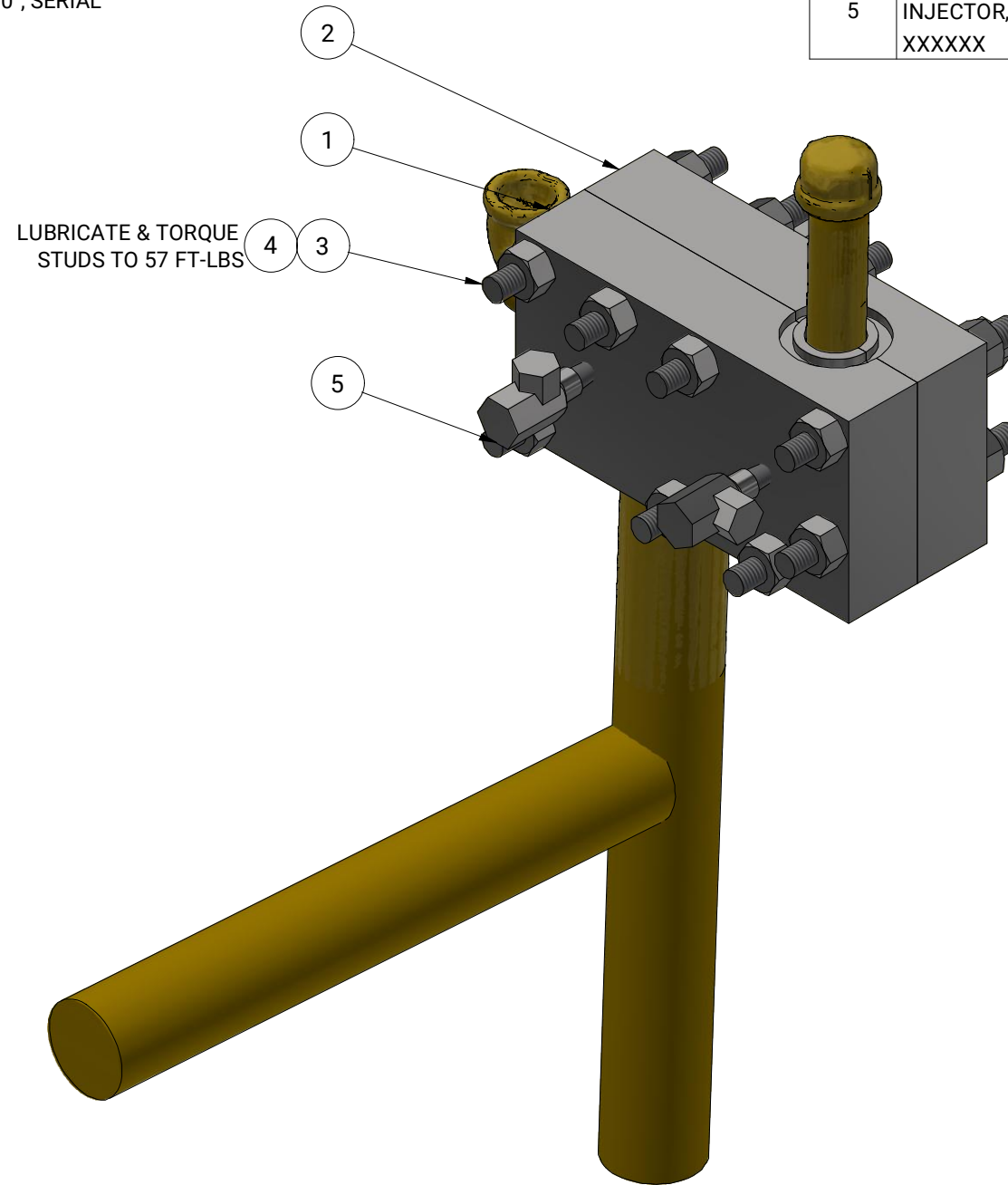
1. ALL DIMENSIONS ARE TYPICAL UNLESS NOTED
2. STAMP IN 1/8" HIGH LETTERS "COMPANY", JOB # "", DWG # "XXX-220722-01 REV 0", SERIAL # "XXXXXX", CRN #, & HEAT # ON ALL PIECES (EXCLUDING HARDWARE)
3. GRAPHITE ROPE PACKING IN PERIMETER AND/OR BORE GROOVES
4. MILL SPLITLINE FLAT
5. APPROXIMATE WEIGHT: 23 LBS

ENCLOSURE NOTES:

1. APPROXIMATE VOID VOLUME: 27 IN³
2. APPROXIMATE PERIMETER SEAL VOLUME: IN³
3. MAXIMUM VOID FILL INJECTION PRESSURE: PSI + STATIC GUN
4. MAXIMUM PERIMETER INJECTION PRESSURE: PSI + STATIC GUN

DIMENSIONS ON THIS PAGE ARE FOR REFERENCE ONLY

ITEM	DESCRIPTION	QTY	MATERIAL	WEIGHT (LBS)	MAT'L NOTE	MTR	COC	NR
1	PLATE, ENCLOSURE HALF 1	1	SA-516 GR. 70N	9.2	1, 2	X		
2	PLATE, ENCLOSURE HALF 2	1	SA-516 GR. 70N	9.2	1, 2	X		
3	STUD, 1/2-13UNC X 5.5 LG	8	SA-193 GR. B7	0.3	1		X	
4	NUT, 1/2-13UNC, HEAVY HEX	16	SA-194 GR. 2H	0.1	1		X	
5	INJECTOR, 1/8 NPT, VOID FILL, PN XXXXXX	4	CARBON STEEL	0.3				X



DESIGN CONDITIONS:

1. DESIGN CODE: 2021 ASME SEC VIII DIV 1 BPVC
2. END USER: TBD
3. DESIGN PRESSURE: 200 PSI
4. OPERATING PRESSURE: 100 PSI
5. DESIGN TEMPERATURE: 300 °F
6. OPERATING TEMPERATURE: 250 °F
7. MDMT: -20 °F
8. CORROSION ALLOWANCE: 0 IN
9. SERVICE: STEAM

MY Engineering Ltd.
 9740 47 AVE
 EDMONTON, AB
 T6E 5P3
PERMIT TO PRACTICE
 P14476

REMOVE ALL SHARP CORNERS AND BURRS
 ALL DIMENSIONS IN INCHES -- UNLESS OTHERWISE SPECIFIED

 THIRD ANGLE PROJECTION

GD&T		DIMENSIONS	
○ CONCENTRICITY	±0.005 TIR	FRACTIONAL	±1/16
- STRAIGHTNESS	±0.005 / 5"	DECIMAL	.XX ±0.100
⊥ SQUARENESS	±0.010 / 5"		.XX ±0.010
∥ PARALLELISM	±0.010 / 5"		.XXX ±0.005
⊕ TRUE POSITION	0.005		.XXXX ±0.002
MACHINED SURFACES		ANGULAR	±0.5°

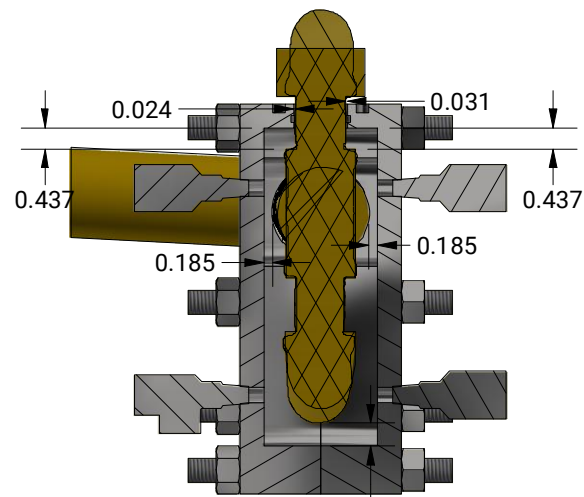
This drawing and all rights therein (including copyright, design right and all like rights) are the property of CUSTOMER_NAME_HERE, and must not be used, distributed to others or reproduced without the written permission or consent of CUSTOMER_NAME_HERE.

CUSTOMER LOGO_HERE

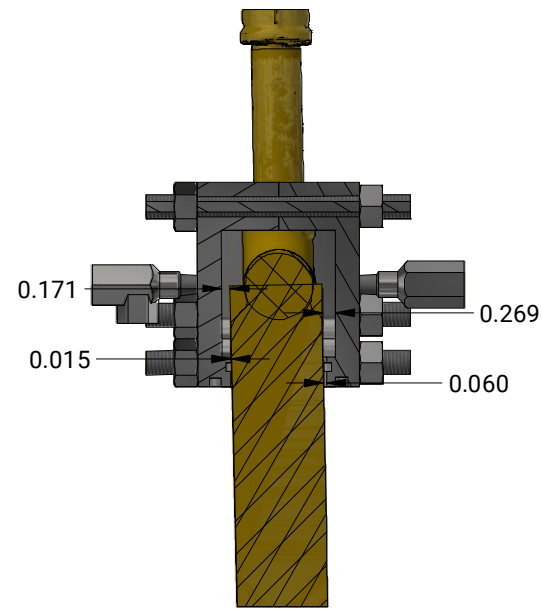
CUSTOMER ADDRESS HERE

CUSTOMER_ABBREVIATED_NAME_HERE JOB #:			
DRAWING No:	XXX-220722-01	REV.	0
TITLE 3 BORE ENCLOSURE			
SERIAL #:	XXXXXX	SIZE	SHEET OF
		B	1 3
STATUS: Released			

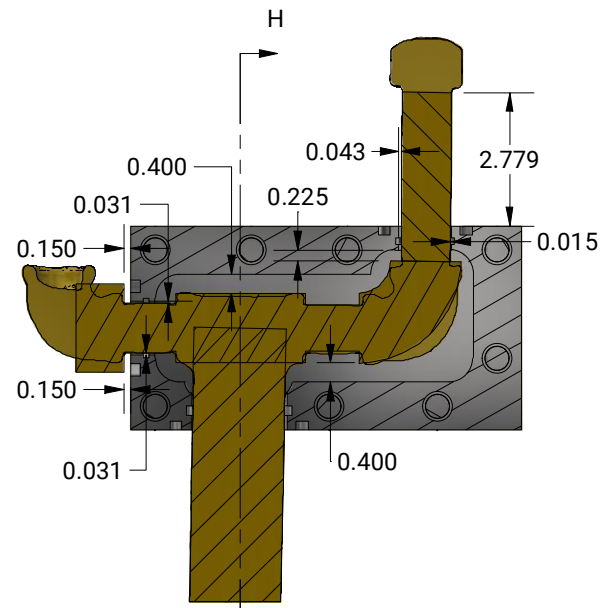
DRAWN BY: T. REEVE 2023-03-01 CHECKED BY: D. EBANKS 2023-03-01



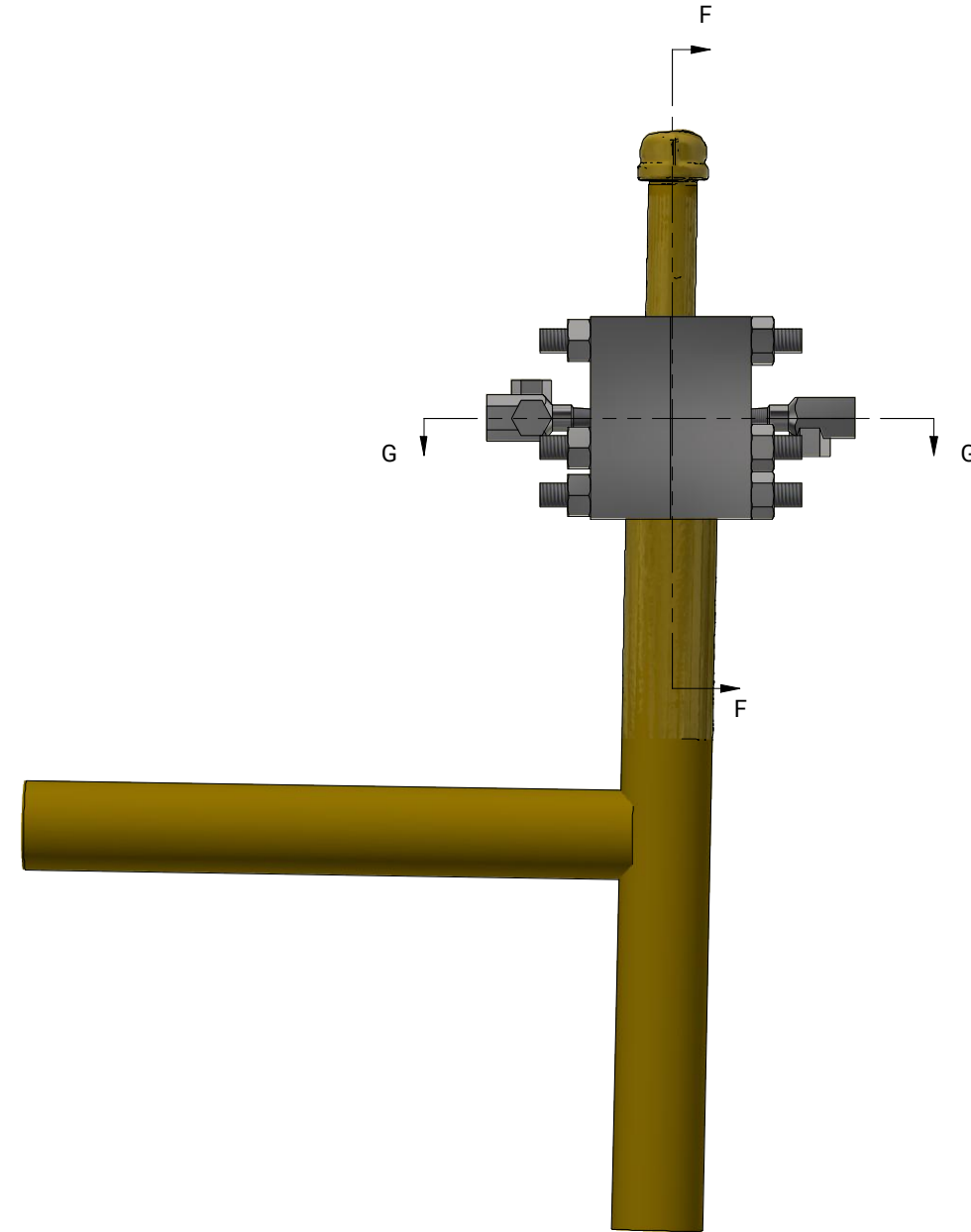
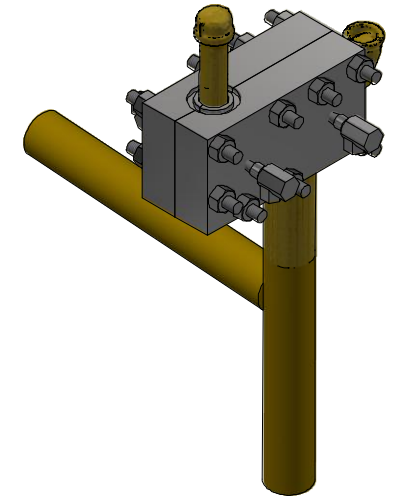
SECTION G-G
SCALE 1/4



SECTION H-H
SCALE 1/4

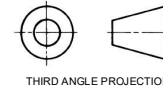


SECTION F-F
SCALE 1/4



MY Engineering Ltd.
9740 47 AVE
EDMONTON, AB
T6E 5P3
PERMIT TO PRACTICE
P14476

REMOVE ALL SHARP CORNERS AND
BURRS
ALL DIMENSIONS IN INCHES --
UNLESS OTHERWISE SPECIFIED



THIRD ANGLE PROJECTION
DRAWN BY: T. REEVE

GD&T
○ CONCENTRICITY ±0.005 TIR
- STRAIGHTNESS ±0.005 / 5"
⊥ SQUARENESS ±0.010 / 5"
|| PARALLELISM ±0.010 / 5"
⊕ TRUE POSITION 0.005
MACHINED SURFACES

DIMENSIONS
FRACTIONAL ±1/16
DECIMAL .X ±0.100
.XX ±0.010
.XXX ±0.005
.XXXX ±0.002
ANGULAR ±0.5°

This drawing and all rights therein (including copyright, design right and all like rights) are the property of CUSTOMER_NAME_HERE, and must not be used, distributed to others or reproduced without the written permission or consent of CUSTOMER_NAME_HERE.

2023-03-01 CHECKED BY: D. EBANKS 2023-03-01

**CUSTOMER
LOGO_HERE**

**CUSTOMER
ADDRESS
HERE**

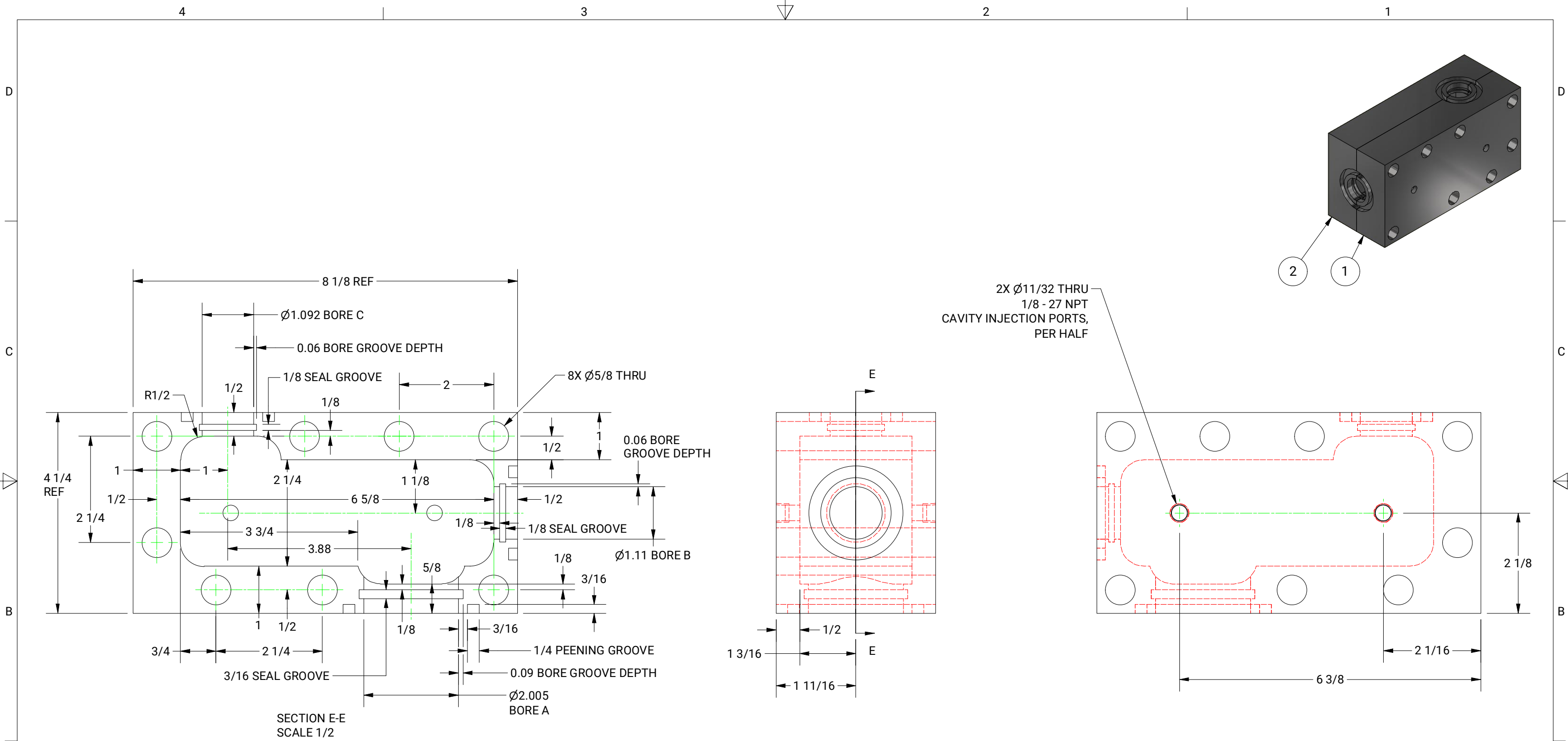
CUSTOMER_ABBREVIATED_NAME_HERE JOB #:

DRAWING No: XXX-220722-01 REV. 0

TITLE
3 BORE ENCLOSURE

SERIAL #: XXXXXX SIZE B SHEET 2 OF 3

STATUS: Released



--	--

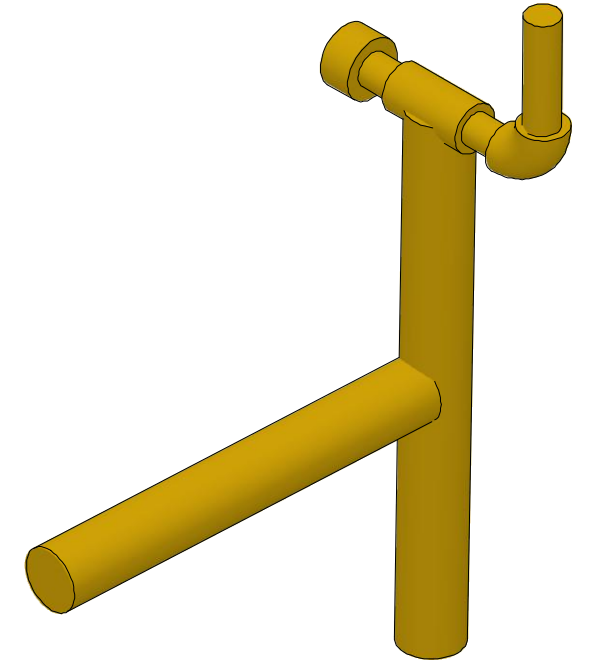
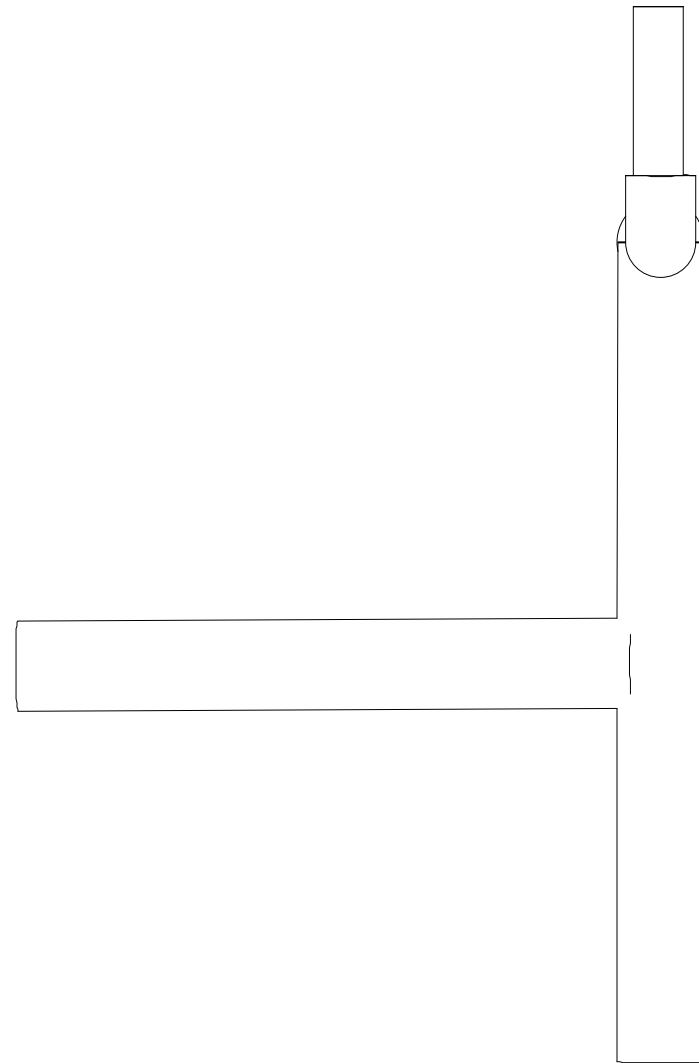
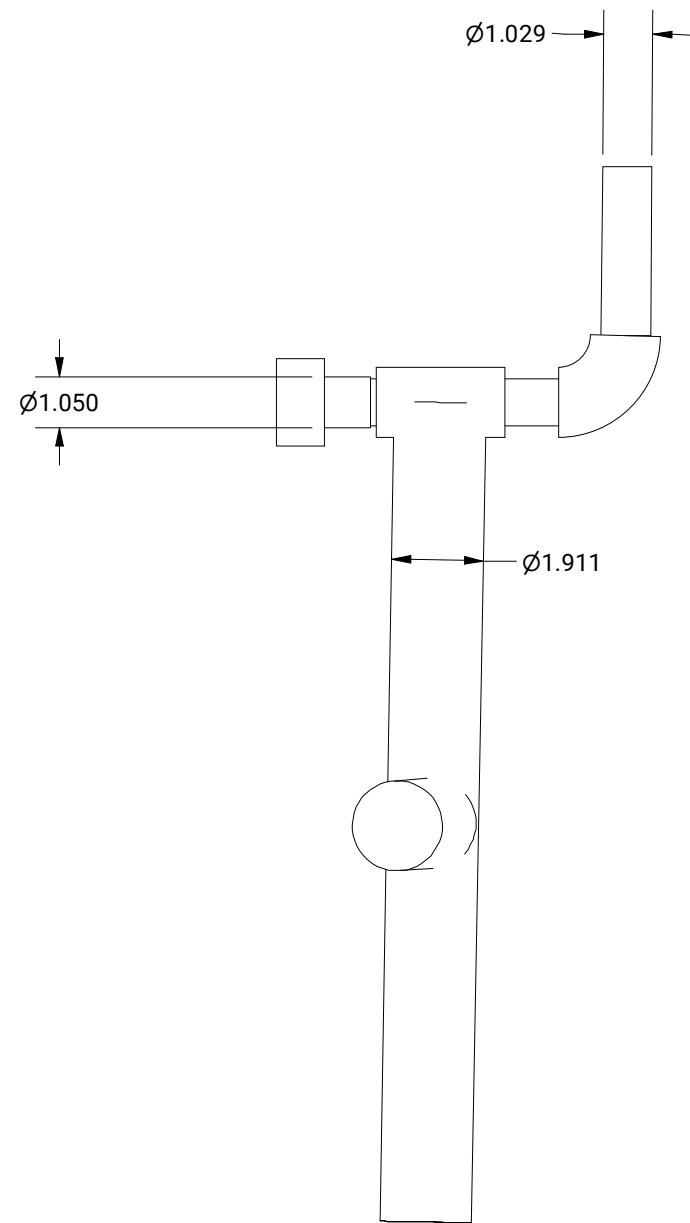
MY Engineering Ltd.
 9740 47 AVE
 EDMONTON, AB
 T6E 5P3
 PERMIT TO PRACTICE
 P14476

REMOVE ALL SHARP CORNERS AND BURRS
 ALL DIMENSIONS IN INCHES -- UNLESS OTHERWISE SPECIFIED

 THIRD ANGLE PROJECTION
 DRAWN BY: T. REEVE

GD&T	○ CONCENTRICITY ±0.005 TIR	DIMENSIONS	FRACTIONAL ±1/16
— STRAIGHTNESS ±0.005 / 5"	DECIMAL .X ±0.100		
⊥ SQUARENESS ±0.010 / 5"	.XX ±0.010		
∥ PARALLELISM ±0.010 / 5"	.XXX ±0.005		
⊕ TRUE POSITION 0.005	.XXXX ±0.002		
MACHINED SURFACES	ANGULAR ±0.5°		
<small>This drawing and all rights therein (including copyright, design right and all like rights) are the property of CUSTOMER_NAME_HERE, and must not be used, distributed to others or reproduced without the written permission or consent of CUSTOMER_NAME_HERE.</small>			
CHECKED BY: D. EBANKS	2023-03-01	CHECKED BY: D. EBANKS	2023-03-01

CUSTOMER LOGO_HERE	CUSTOMER ADDRESS_HERE		
	CUSTOMER_ABBREVIATED_NAME_HERE JOB #:		
	DRAWING No: XXX-220722-01	REV. 0	
	TITLE 3 BORE ENCLOSURE		
SERIAL #: XXXXXX	SIZE B	SHEET OF 3 3	
STATUS: Released			

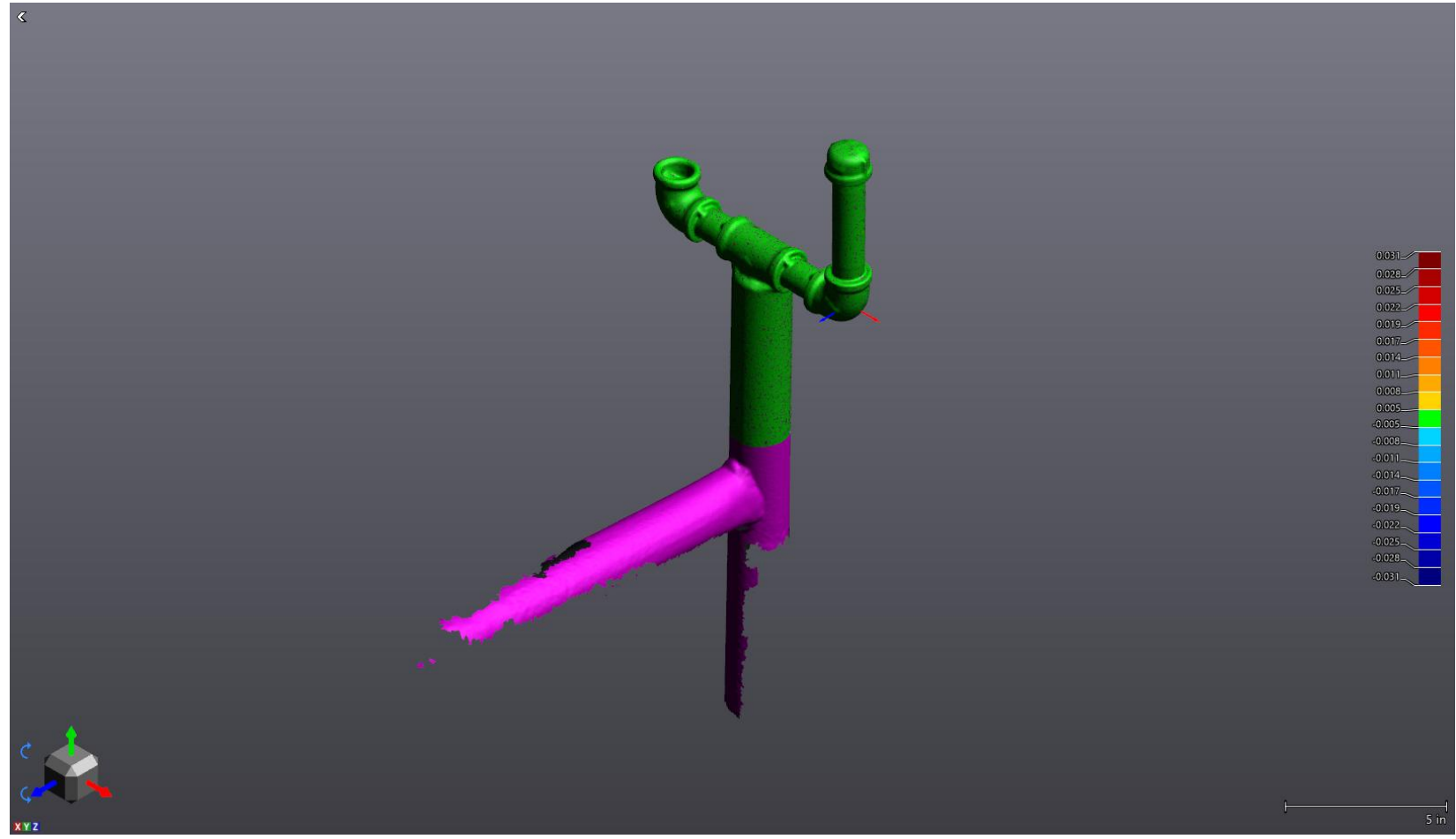
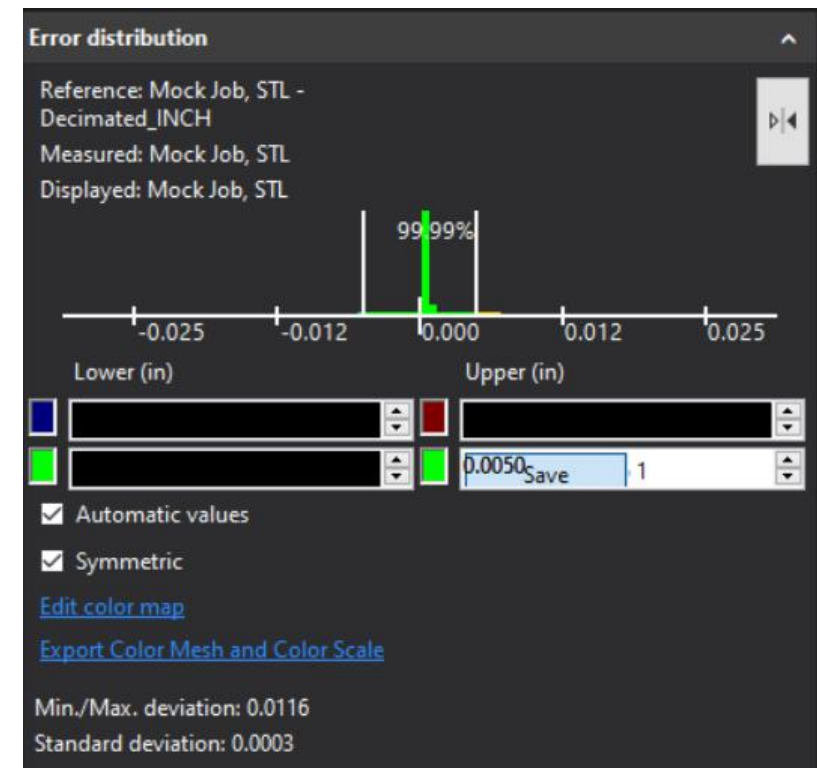
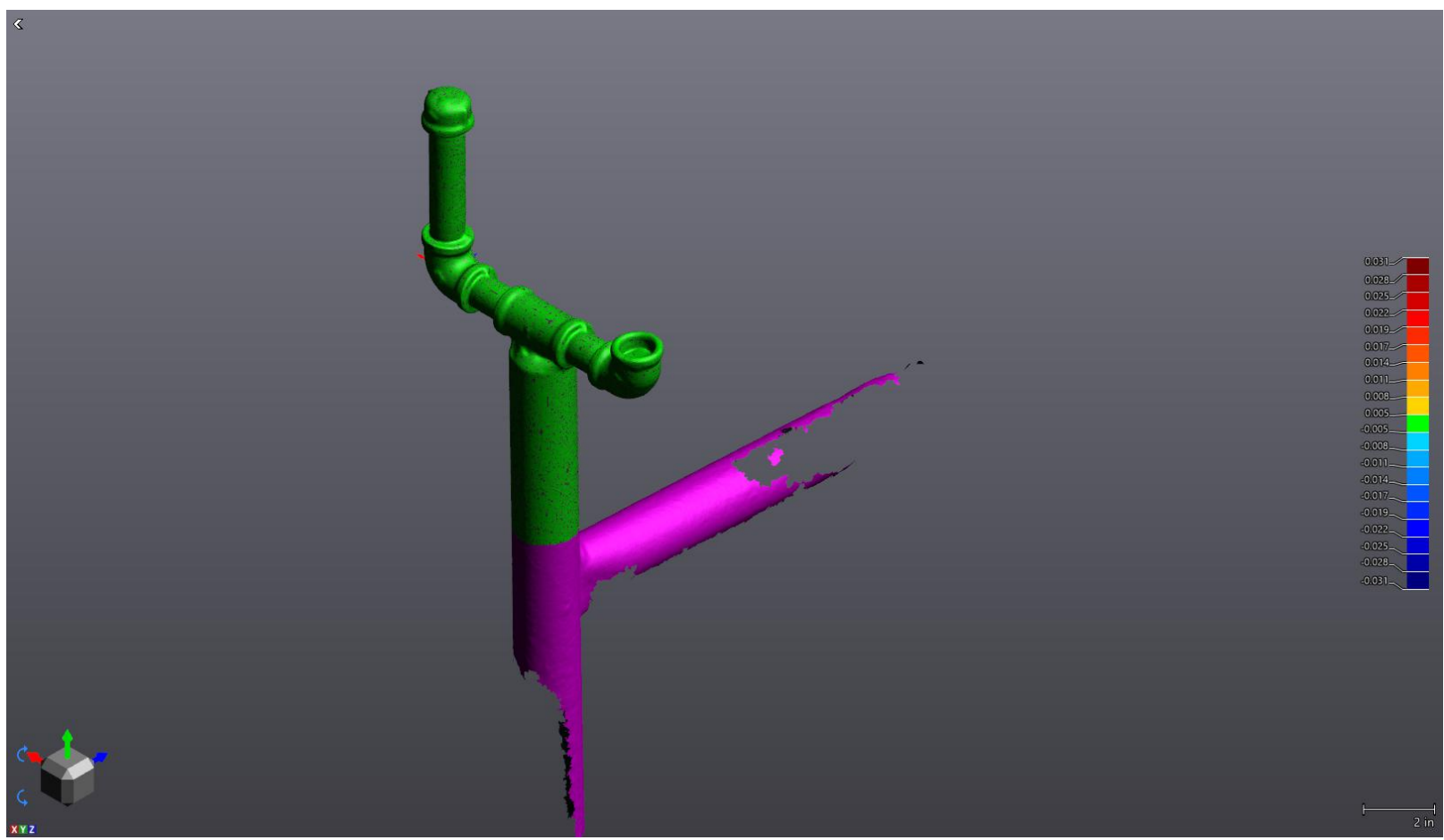


FIELD DIMENSIONS:

1. COMPANY
2. JOB #:

3. DRAWING #: XXX-220722-01 REV 0
4. SERIAL #: XXXXXX

5. END USER: TBD
6. TITLE: 3 BORE ENCLOSURE

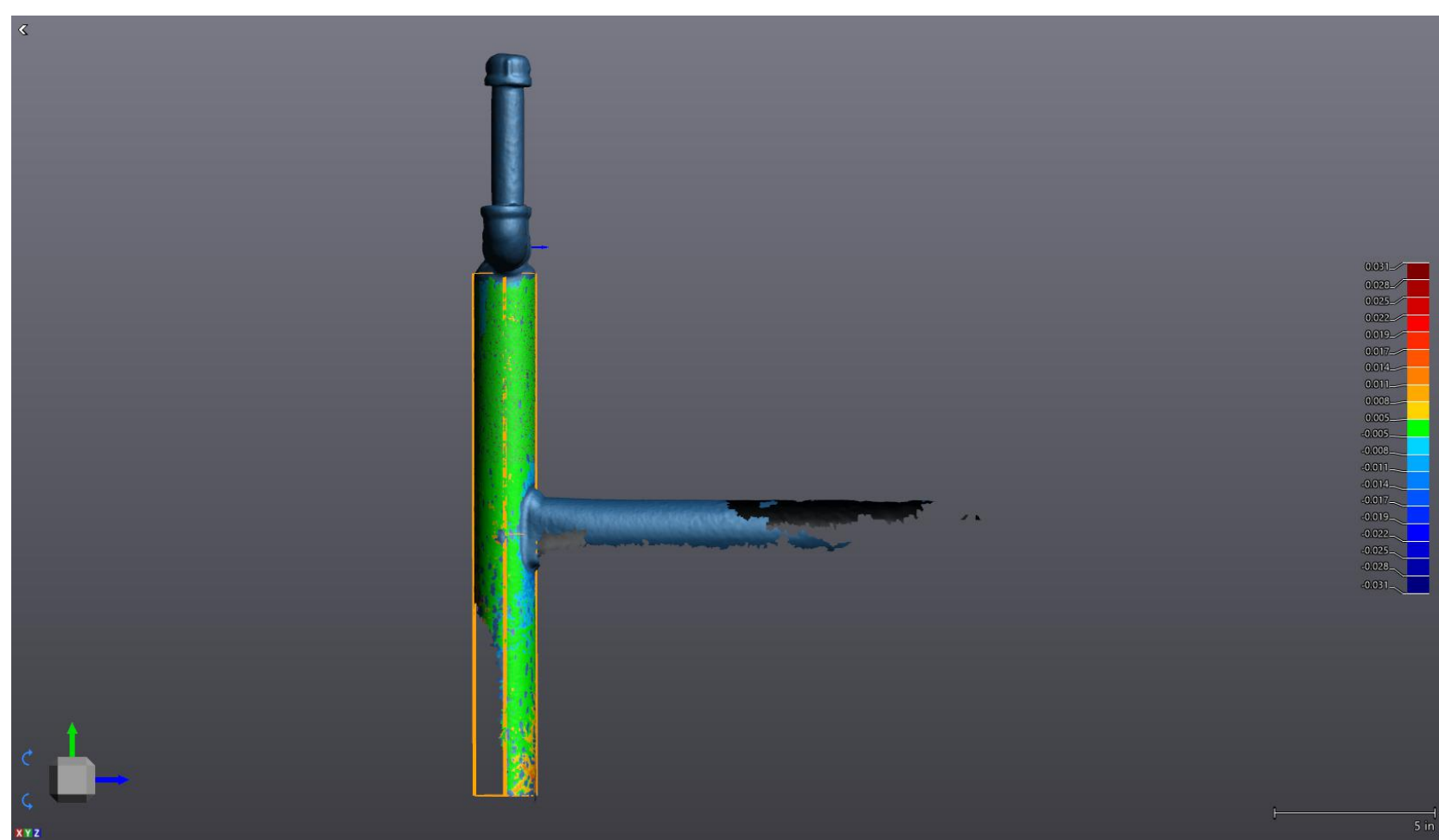


FIELD DIMENSIONS:

1. COMPANY
2. JOB #:

3. DRAWING #: XXX-220722-01 REV 0
4. SERIAL #: XXXXXX

5. END USER: TBD
6. TITLE: 3 BORE ENCLOSURE

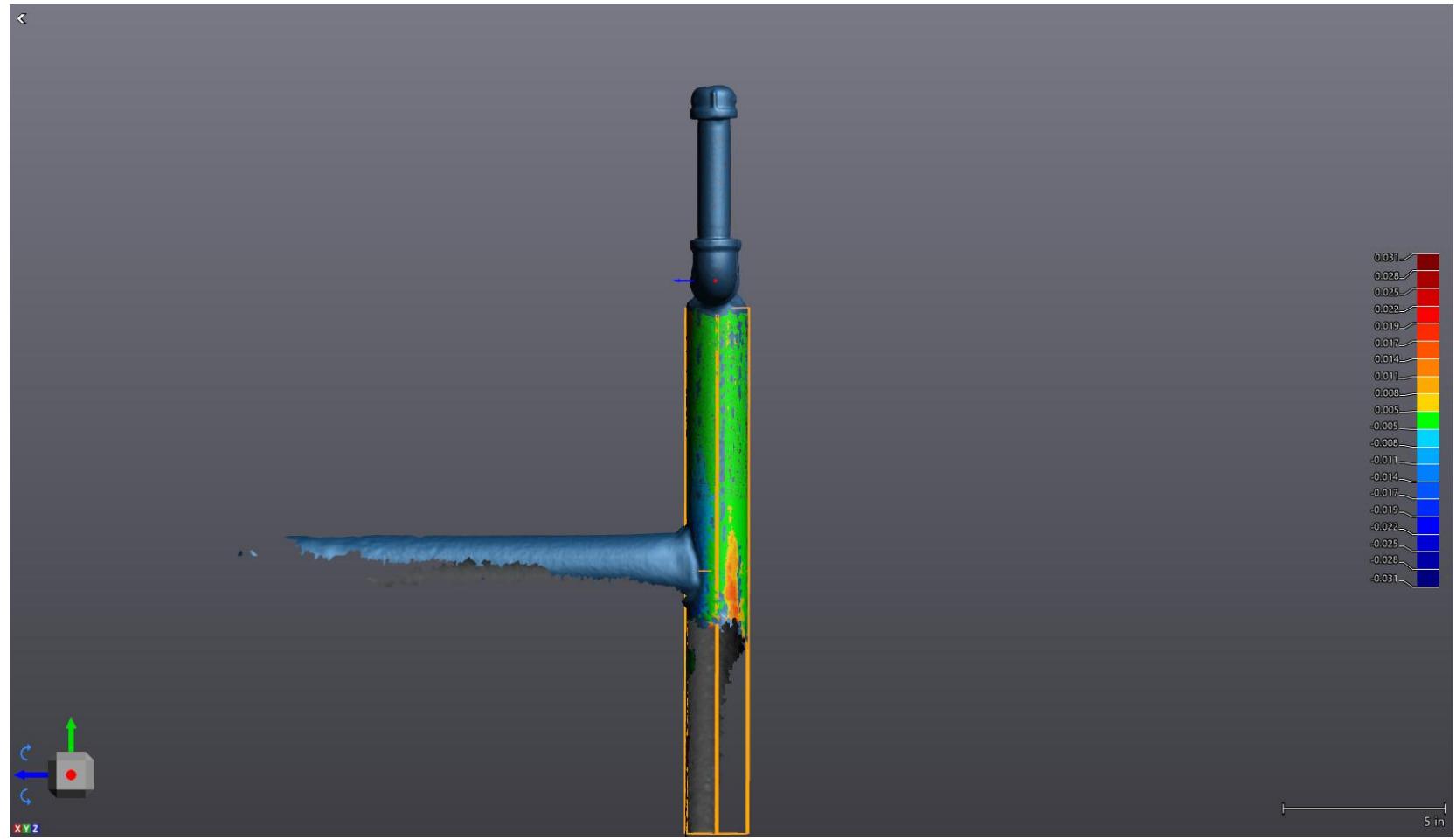


Entity details

Name	Bore A		
Diameter (in)	1.9114		
Center (in)			
X	-4.0109	Y -8.9486	Z -0.0508
Axis			
I	0.018	J 1.000	K -0.001
Standard deviation (in)	0.0047		
Min./Max. deviation (in)	0.0437		

[Edit color map](#)

Hide color map



FIELD DIMENSIONS:

1. COMPANY
2. JOB #:

3. DRAWING #: XXX-220722-01 REV 0
4. SERIAL #: XXXXXX

5. END USER: TBD
6. TITLE: 3 BORE ENCLOSURE



Entity details

Name	Bore C		
Diameter (in)	1.0290		
Center (in)			
X	0.0260	Y	3.1479
Z			0.0457
Axis			
I	0.008	J	1.000
K			0.000
Standard deviation (in)	0.0037		
Min./Max. deviation (in)	0.0316		
Edit color map			
<input type="button" value="Hide color map"/>			



FIELD DIMENSIONS:

1. COMPANY
2. JOB #:

3. DRAWING #: XXX-220722-01 REV 0
4. SERIAL #: XXXXXX

5. END USER: TBD
6. TITLE: 3 BORE ENCLOSURE



Entity details

Name	Bore B		
Diameter (in)	1.0501		
Center (in)			
X	-5.7302	Y	0.0000
Z			0.0000
Axis			
I	1.000	J	0.000
K			0.000
Standard deviation (in)	0.0061		
Min./Max. deviation (in)	0.0337		

[Edit color map](#)

Hide color map



FIELD DIMENSIONS:

1. COMPANY
2. JOB #:

3. DRAWING #: XXX-220722-01 REV 0
4. SERIAL #: XXXXXX

5. END USER: TBD
6. TITLE: 3 BORE ENCLOSURE